



Glass Divider

The Sneeze Guard Company

Project Name: _____

Location: _____

Item #: _____ Qty: _____

Date: _____

Model: **C100**

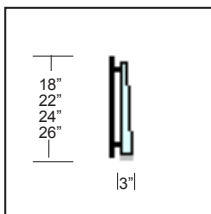
Class: Partition - Sneeze Guard - (vertical shield)

Model C100 is part of the Crystalline Series featuring the elegant all glass look. The C100 is characterized by the vertical front shield. These partitions allow a maximum of 60" between supports and up to 84" with the use of a mini-clamp. When multiple units are connected they provide a continuous smooth front shield and is a favorite for carving and prep stations. The C100 is designed to handle inside or outside angles and comes in 1/4", 3/8", or 1/2" safety tempered glass. There are four standard heights with custom sizes available. Always review your sneeze guard plans with your health department.

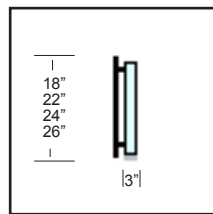
- Clear 1/2" Safety Tempered Glass Supports
- Straight and Curved Counter Installations
- Four Standard Heights (18", 22", 24", and 26")
- Smooth Continuous Front Shield
- Five Standard Support Styles
- Chrome Finish Hardware



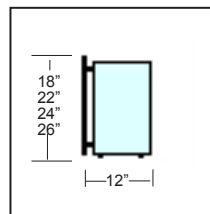
Support Options:



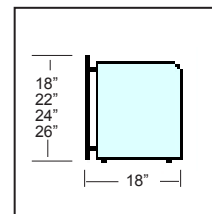
Tapered Post



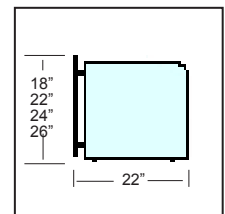
Square Post



Closed



Deep
18" Depth



Extended
22" Depth

Options & Accessories

Glass Options

- 1/4", 3/8", or 1/2" Glass
- Crystal Clear Glass
- Gray or Bronze Glass
- Obscure Pattern Glass
- Radius Corners
- Frosted Logo
- Frosted Glass

Mounting Options

- Tab Feet
- U-Channel
- Mini-Clamp
- Flanged Boot

Accessories

- LED Edge Lights
- LED Lights
- Logo Lights



The "Deep" or "Extended" supports are required as end supports on NSF certified sneeze guards. The "Front", "Open", and "Sculpture" supports can be used for internal supports in multi-bay configurations

